

<b>PROJECT :</b>
<b>OPENING ID :</b>
<b>SPECIFIER :</b>
<b>ISSUE DATE :</b>

**SET INCLUDES :**  
 System M+ (M32+) : Class D  
 Round Floor Plate, Adjustable / Finish : stainless steel  
 Standard Top Pivot, ≥70mm Backset, Class G for 15mm spindle  
 Ceiling Plate : Class G (15mm spindle) / Finish : stainless steel  
 Mounting Kit : epoxy, hex keys, floor template, adjustment card  
 All Fasteners



**NOTES :**

[BUY NOW](#)

**CONTACT :** BETTER BUILDING HARDWARE | +1-888-636-1627 | sales@betterbuildinghardware.com

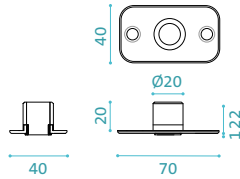
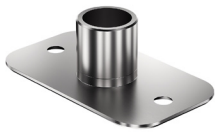
**SET CODE : ST.M+.70.D.R.SS**

CSI DIVISION : 08

### Ceiling Plate : 15 mm spindle

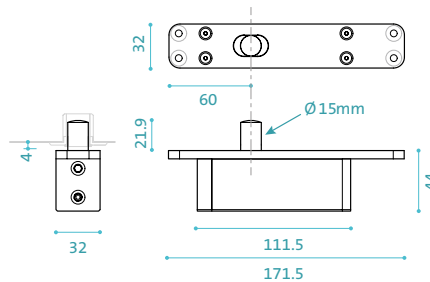
Component ID : CP.X.X.G.S.BK

dimensions in mm



### Top Pivot : TP-70, 15 mm spindle

Component ID : TP.X.70.G.X.XX



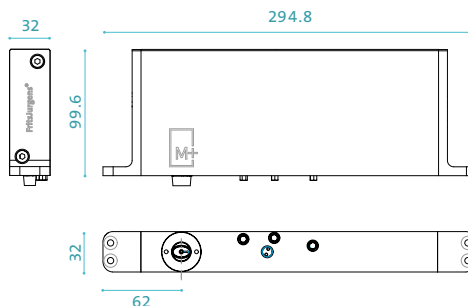
### System M+ (M32+) : Class D

**FEATURES :**

- Dual-acting pivot and closer
- Hold positions at ±90° and 0°
- Closing to 0° from ±90° and ±125°
- Minimum pivot point backset : 2-3/4" (70mm)
- Minimum door thickness : 1-9/16" (40mm)
- Virtually no door width or height limit
- 5 Weight Classes for doors up to 770 lbs.
- Adjustable Damper Control and Backcheck
- Adjustable 30° Speed Control
- Adjustable Latching Speed Control
- Axial/Plumb Adjustment ±5mm side-to-side
- EN 1670 - Class 5 Corrosion Resistance
- Maintenance-free
- Suitable for all door/frame materials

### Bottom Pivot : Class D

Component ID : BP.M+.70.D.X.XX



### Resources

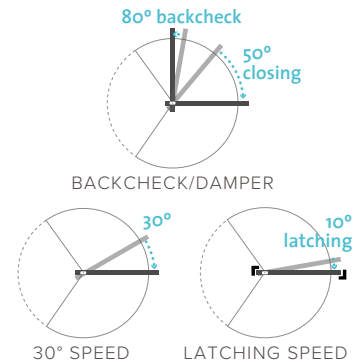
DOWNLOADS



CONFIGURE YOUR PIVOT  
[FritsJurgens Selector](#)

### System M+

Three Speed Adjustments



### Floor Plate : Round

Component ID : FP.M.X.X.R.SS

