

PROJECT :
OPENING ID :
SPECIFIER :
ISSUE DATE :

SET INCLUDES :
 System M+ (M32+) : Class A
 Flush Floor Plate, Squared Corners, Non-adjustable, stainless steel
 Standard Top Pivot, ≥ 70 mm Backset, Class B for 10mm spindle
 Ceiling Plate : Class B (10mm spindle) / Finish : stainless steel
 Mounting Kit : epoxy, hex keys, floor template, adjustment card
 All Fasteners



[BUY NOW](#)

SET CODE : ST.M+.70.A.FS.SS

NOTES :

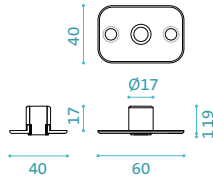
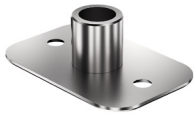
CONTACT : BETTER BUILDING HARDWARE | +1-888-636-1627 | sales@betterbuildinghardware.com

CSI DIVISION : 08

Ceiling Plate : 10 mm spindle

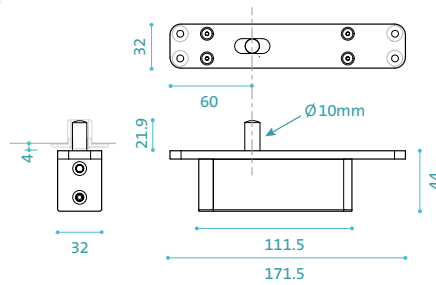
Component ID : CP.X.X.B.S.BK

dimensions in mm



Top Pivot : TP-70, 10 mm spindle

Component ID : TP.X.70.B.X.XX



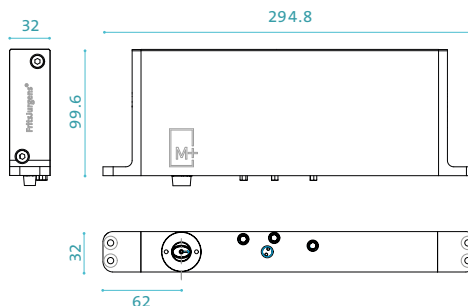
System M+ (M32+) : Class A

FEATURES :

- Dual-acting pivot and closer
- Hold positions at $\pm 90^\circ$ and 0°
- Closing to 0° from $\pm 90^\circ$ and $\pm 125^\circ$
- Minimum pivot point backset : 2-3/4" (70mm)
- Minimum door thickness : 1-9/16" (40mm)
- Virtually no door width or height limit
- 5 Weight Classes for doors up to 770 lbs.
- Adjustable Damper Control and Backcheck
- Adjustable 30° Speed Control
- Adjustable Latching Speed Control
- Axial/Plumb Adjustment ± 5 mm side-to-side
- EN 1670 - Class 5 Corrosion Resistance
- Maintenance-free
- Suitable for all door/frame materials

Bottom Pivot : Class A

Component ID : BP.M+.70.A.X.XX



Resources

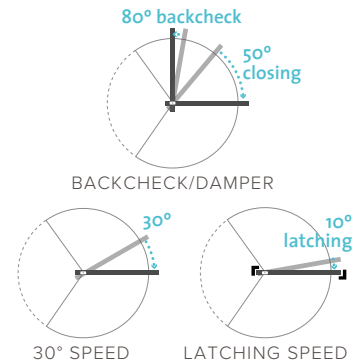
DOWNLOADS



CONFIGURE YOUR PIVOT
[FritsJurgens Selector](#)

System M+

Three Speed Adjustments



Floor Plate : Flush, Squared Corners

Component ID : FP.M.X.X.FS.SS

