

# System One

## Set with Cable Grommet Top Pivot

# FritsJurgens®

<b>PROJECT :</b>	<b>SET INCLUDES :</b> System One Rectangular Floor Plate, Non-adjustable / Finish : stainless steel Cable Grommet Top Pivot, ≥91mm Backset, Class G for 15mm spindle Ceiling Plate : Class G (15mm spindle) / Finish : stainless steel Mounting Kit : epoxy, hex keys, floor template All Fasteners
<b>OPENING ID :</b>	
<b>SPECIFIER :</b>	
<b>ISSUE DATE :</b>	



[BUY NOW](#)

**SET CODE : ST.ONE.CG.O.S.SS**

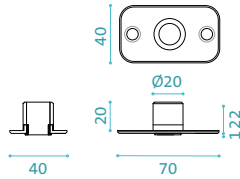
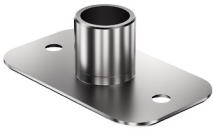
CSI DIVISION : 08

**CONTACT :** BETTER BUILDING HARDWARE | +1-888-636-1627 | sales@betterbuildinghardware.com

### Ceiling Plate : Class G

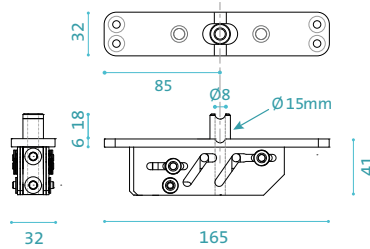
Component ID : CP.X.X.G.S.SS

dimensions in mm



### Top Pivot : TP-CG

Component ID : TP.X.CG.G.X.XX



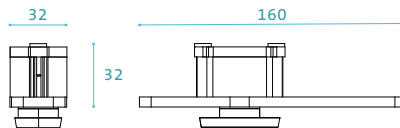
### System One

#### FEATURES :

- Free-swinging 360° operation
- No stops/holds
- No closer/damper function
- For doors up to 1,100 lbs
- Minimum door thickness : 1-9/16" (40mm)
- Minimum pivot point backset : 91mm
- Virtually no door width or height limit
- Axial/Plumb Adjustment ±5mm side-to-side
- Cable Grommet top spindle for power transfer
- EN 1670 - Class 5 Corrosion Resistance
- Maintenance-free
- Suitable for all door/frame materials

### Bottom Pivot : System One

Component ID : BP.ONE.70.O.X.XX



### Resources

#### DOWNLOADS



CONFIGURE YOUR PIVOT  
FritsJurgens Selector [▶](#)

### Floor Plate : Rectangular

Component ID : FP.S13.X.X.S.SS

