

PROJECT :	SET INCLUDES : System One Rectangular Floor Plate, Non-adjustable / Finish : stainless steel Legacy Top Pivot, ≥ 91 mm Backset, Class G for 10mm spindle Ceiling Plate : Class B (10mm spindle) / Finish : stainless steel Mounting Kit : epoxy, hex keys, floor template All Fasteners	
OPENING ID :		
SPECIFIER :		
ISSUE DATE :		

[BUY NOW](#)

SET CODE : ST.ONE.91.O.S.SS

NOTES :

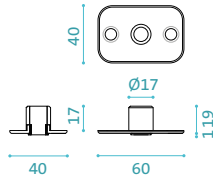
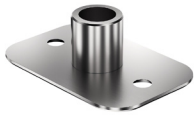
CONTACT : BETTER BUILDING HARDWARE | +1-888-636-1627 | sales@betterbuildinghardware.com

CSI DIVISION : 08

Ceiling Plate : 10 mm spindle

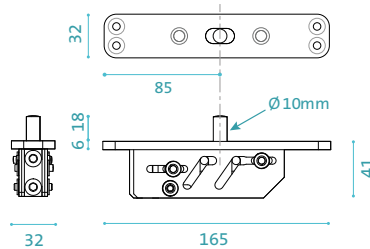
Component ID : CP.X.X.B.S.SS

dimensions in mm



Top Pivot : TP-91

Component ID : TP.X.91.G.X.XX



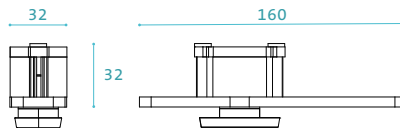
System One

FEATURES :

- Free-swinging 360° operation
- No stops/holds
- No closer/damper function
- For doors up to 1,100 lbs
- Minimum door thickness : 1-9/16" (40mm)
- Minimum pivot point backset : 91mm
- Virtually no door width or height limit
- Axial/Plumb Adjustment ± 5 mm side-to-side
- EN 1670 - Class 5 Corrosion Resistance
- Maintenance-free
- Suitable for all door/frame materials

Bottom Pivot : System One

Component ID : BP.ONE.70.O.X.XX



Resources

DOWNLOADS



CONFIGURE YOUR PIVOT
FritsJurgens Selector [▶](#)

Floor Plate : Rectangular

Component ID : FP.S13.X.X.S.SS

